



INDOFINE Chemical Company, Inc.

121 Stryker Lane, Bldg. 30, Suite 1 • Hillsborough, NJ 08844 • U.S.A.

Phone: (908) 359-6778 • FAX: (908) 359-1179

website: www.indofinechemical.com

e-mail: chemical@indofinechemical.com

CERTIFICATE OF ANALYSIS

Catalog Number: 021348S

Product Name: **NOBILETIN with HPLC**
(3',4',5,6,7,8-Hexamethoxyflavone)

CAS Number: [478-01-3]

Lot Number: 1808120

Chemical Formula: C₂₁H₂₂O₈

Molecular Weight: 402.39

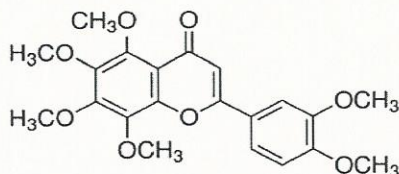
Appearance: White powder

Loss on drying: 0.40%

Solubility: Soluble in chloroform

Storage: Store in a cool, dry place. Protected from light and heat.

Purity(HPLC): 99.24%



Prepared by:

Ramesh Mandadi

Ramesh Mandadi

Director of Operations

Reviewed and approved by:

Sujata Moton

S. Moton

VP



INDOFINE Chemical Company, Inc.

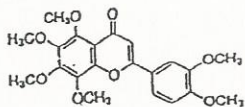
121 Stryker Lane, Bldg. 30, Suite 1 • Hillsborough, NJ 08844 • U.S.A.

Phone: (908) 359-6778 • FAX: (908) 359-1179

website: www.indofinechemical.com

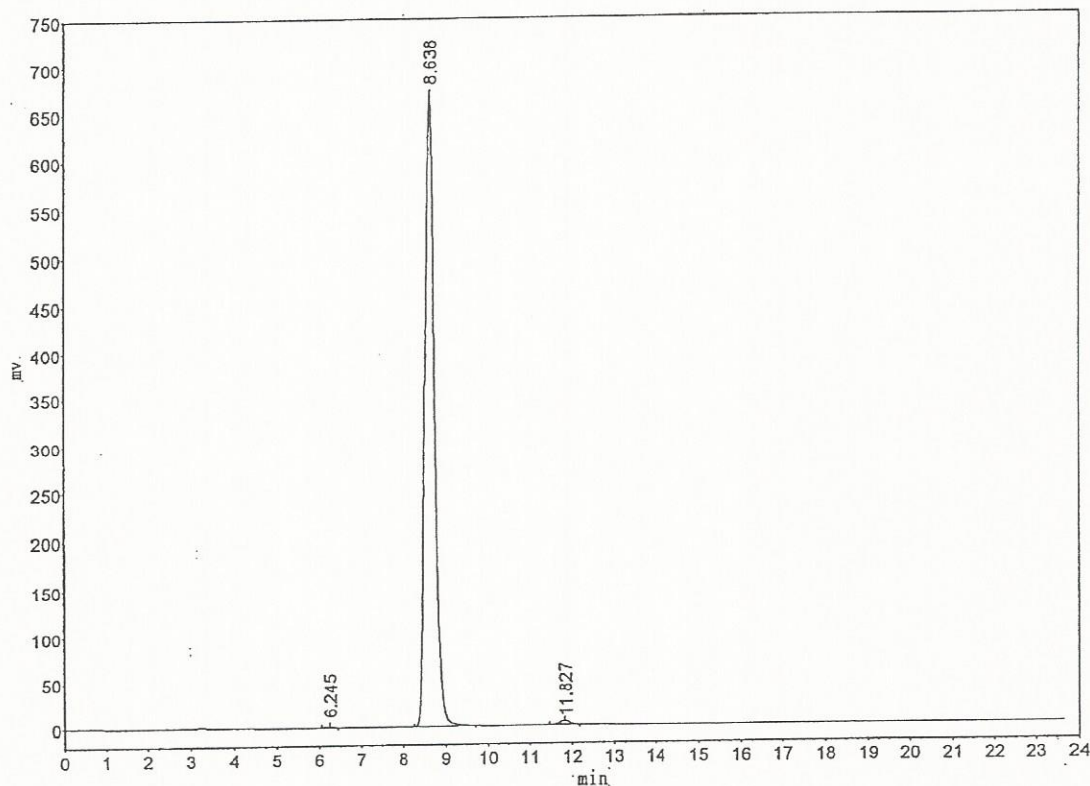
e-mail: chemical@indofinechemical.com

HPLC ANALYSIS



Catalog No.: 021348S
Product Name: Nobiletin
Lot No.: 1808120

Mobile phase : Methanol - (0.03% H_3PO_4) Water 75:25
Flow rate : 0.8 ml/min
Wavelength : 330nm
Temperature : 25°C

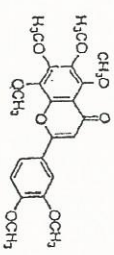


Peak Table

Peak#	RT	Height	Area	%Area
1	6.245	510.595	5669.299	0.0537
2	8.638	669503.563	10475153.000	99.2496
3	11.827	3668.498	73531.500	0.6967
		673682.655	10554353.799	100.0000



INDOFINE Chemical Company, Inc.
 121 STRYKER LANE
 BLDG. 30, SUITE 1
 HILLSBOROUGH, NJ 08844



Catalog No.: 021348S
 Product Name: Nobiletin
 Lot No.: 1808120

7.670
7.665
7.649
7.644
7.553
7.548
7.179
7.157
6.875

4.028
3.978
3.883
3.856
3.842
3.787
3.326

2.508
2.503
2.499

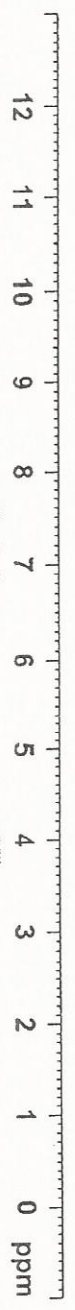
-0.000



Current Data Parameters

```

EXPNO 10
PROCNO 1
F2 - Acquisition Parameters
Date_ 20170124
Time 10:00
INSTRUM spect
PROBHD 5 mm PABBO BB/
PULPROG zg30
TD 65536
SOLVENT DMSO
NS 2
DS 2
SWH 8223.685 Hz
FIDRES 0.1224803 Hz
AQ 3.1993417 sec
RG 327.417
DM 60.800 usec
DE 8.00 usec
TE 295.8 K
D1 1.00000000 sec
1D0 1
----- CHANNEL f1 -----
NUC1 13
P1 15.448990 usec
SFO1 400.152011 MHz
F2 - Processing parameters
SI 65536
WDW EM
SSB 0
LB 0.30 Hz
GB 0
PC 1.00
  
```



1.0078
1.0088
1.0037
1.0000

2.9721
2.9848
2.9762
6.0566
3.0640